

COVID-19, FLU & PNEUMO CLINICS

1st, 2nd, & 3rd Doses &
Flu for Adults

1st & 2nd Doses for
Youth 12-17

February 2nd

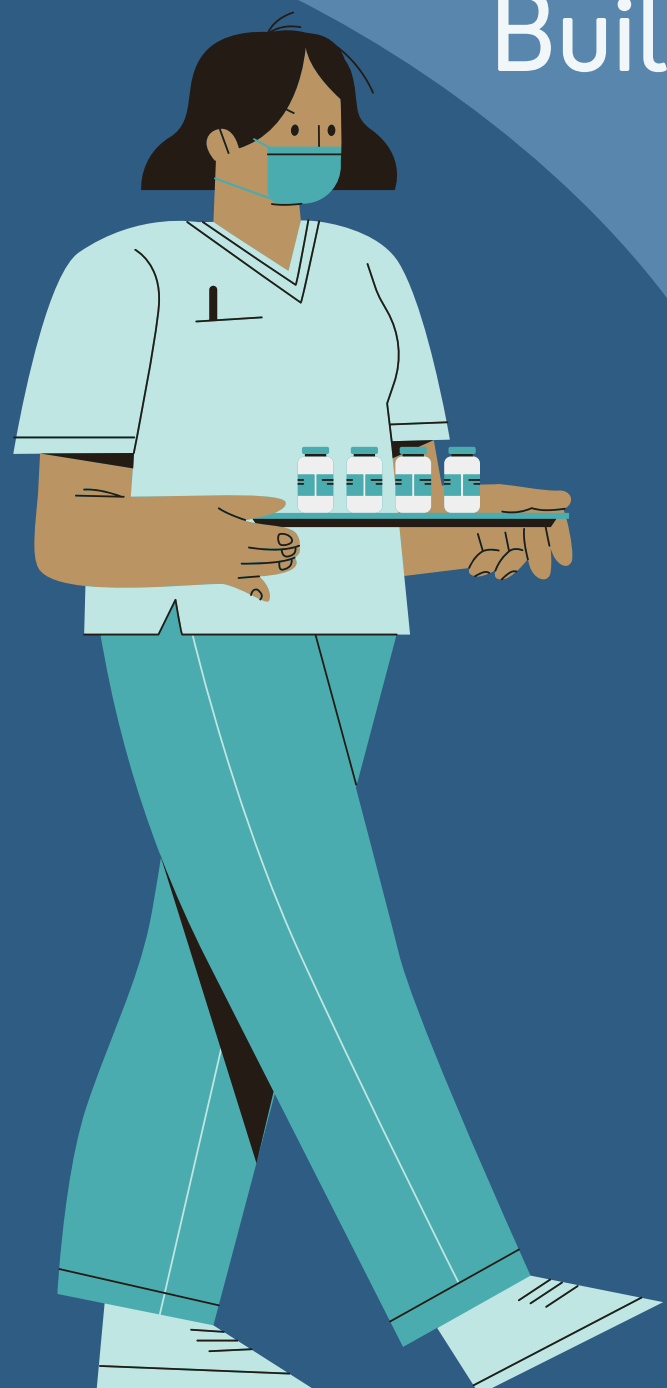
February 9th

February 16th

February 23rd

1:00 pm-4:30 pm

Standoff Multipurpose
Building



FOR INQUIRIES, CALL COMMUNITY
HEALTH AT 403-737-3933



1st & 2nd doses for
Children 5-11 Years

February 3rd

February 10th

February 17th

February 24th

1:00 pm-4:30 pm

Standoff Multipurpose
Building

KBE is offering an incentive to
students who receive a Covid-19
Vaccine. 1st dose: \$25
2nd Dose: an additional \$25

Please bring ID,
Alberta Health Care
card and proof of
first/second doses.

